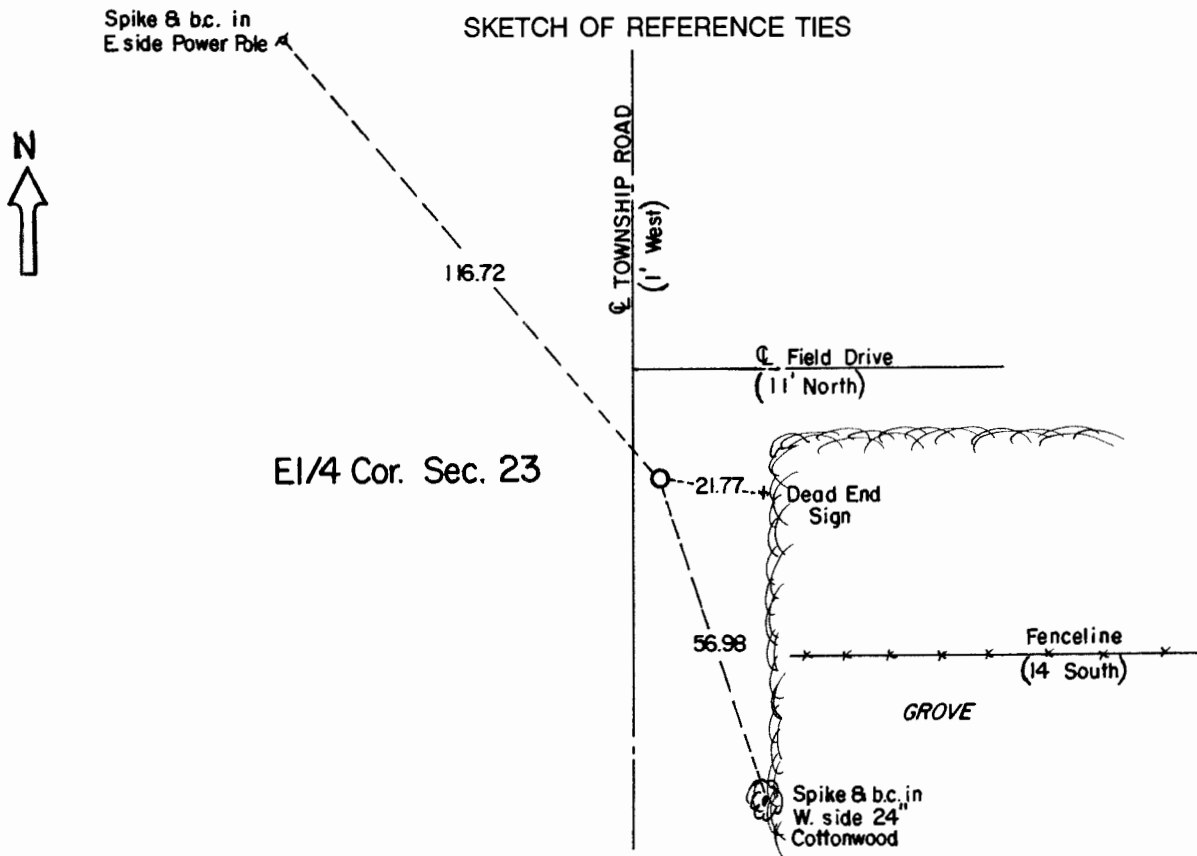


CERTIFICATE OF LOCATION OF GOVERNMENT CORNER

East Quarter Corner of Section **23** , Township **108** , Range **41** 5th P.M.
STATE OF MINNESOTA, County of Murray.

Statement: Aug. 9, 1989 - Found a pointed field stone. Placed a Minnesota Department of Transportation Cast Iron Monument.



Statement of evidence relative to this corner location is on the back of page.

I hereby certify that this document and the data contained herein was prepared by me or under my direct supervision and that I am a duly Registered Land Surveyor under the laws of the State of Minnesota.

Duane A. Bonnema 16 AUG, 1989
Duane A. Bonnema Date

Minnesota Registration No. 14895

OFFICE OF THE COUNTY RECORDER
COUNTY OF MURRAY **NOV 15 1989**

I hereby certify that this document was filed in the County Recorder's office at ___ M. on the ___ day of ___ A.D., 19__

County Recorder *James H. Johnson*

By _____, Deputy
DOCUMENT NO. _____

East Quarter Cor. Sec. 23 T108N-R41W

Statement:

September 1861 Original Government Land Office Surveyor L. G. M. Fletcher records in his field notes, "Built mound with trench pits, charred stake per instructions."

Aug. 9, 1989 Duane A. Bonnema, LS Reg. No. 14895, found a 3/4 inch x 3 foot rod 4 inches below the road surface. A 17 inch x 9 inch x 9 inch pointed field stone was found standing upright 2 feet below the road surface with a wooden stake along the North side. Natural ground was located 1 foot below the road surface. A Minnesota Department of Transportation Cast Iron Monument was placed at the Corner 4 inches below the road surface.